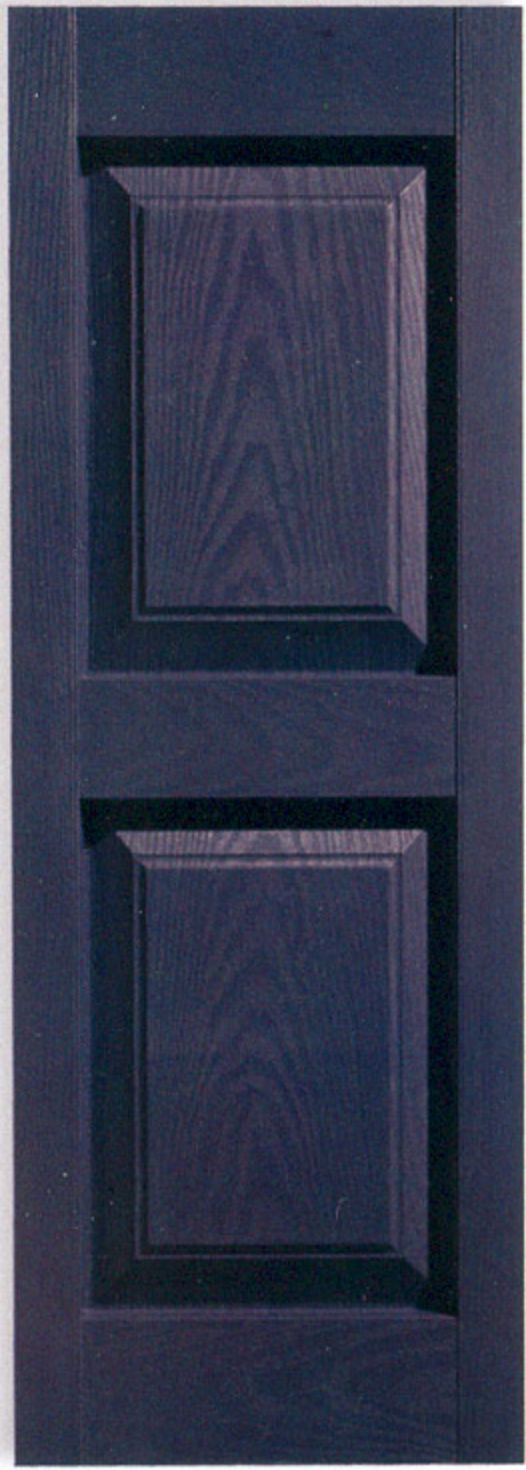


COLONIAL RAISED-PANEL

Quarter
Round
12"
& 15"
Sizes
Available

Square
Transom
12"
& 15"
Sizes
Available

Elliptical
15" Only



001
WHITE



002
BLACK



003
NAVY
BLUE



004
OCEAN
BLUE



005
WEDGEWOOD
BLUE



006
STORM
GRAY



007
MERLOT

Traditional Open Louvered, Colonial Raised -Panel & Board and Batten Shutters

Dinesol's Traditional Open Louvered, Colonial Raised-Panel & Board and Batten Shutters offer the homeowner the natural, deep-cut of textured wood but in a substantial durable copolymer material that's maintenance free.

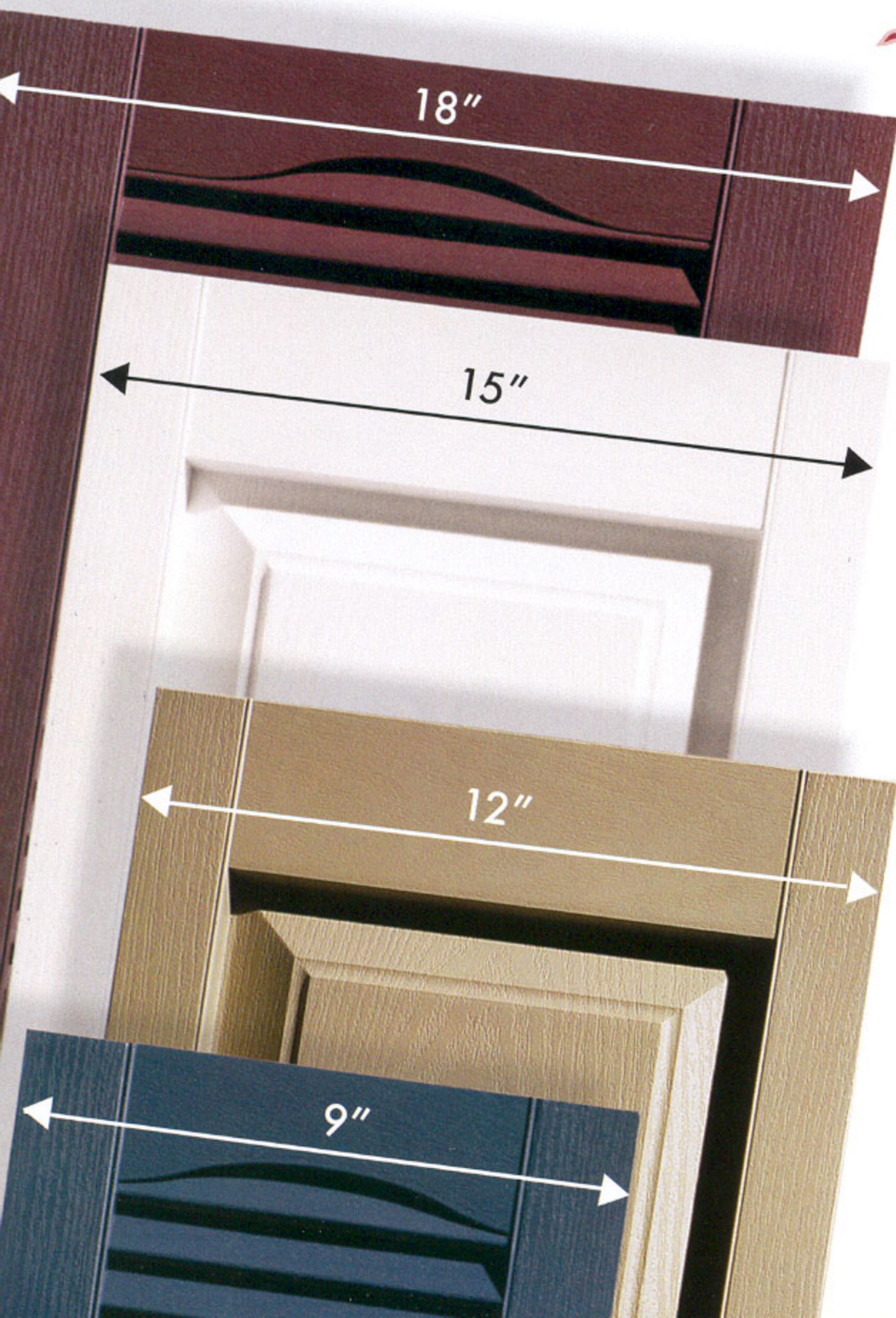
Our 9", 12", 15" and 18" wide louvered and raised-panel shutters are UV-stabilized with colors that go completely through the shutter. They won't chip, rot or warp and are strong enough to withstand most weather conditions.

- **9", 12", 15" & 18" Widths**
- **Extra Heavy-Duty • Extra Durable**
- **Enhanced Wood Grain**
- **Color Molded Throughout**
- **Limited Lifetime Warranty**

COLORS & SIZES FOR ALL

Available in **14 preferred colors** and lengths from 31" to 80" to fit nearly every type of window. Dinesol Louvered, Raised-Panel & Board and Batten Shutters will beautify any homes exterior.

For those who need to match a specific color we offer a **paintable** shutter. Call customer service for custom sizes.

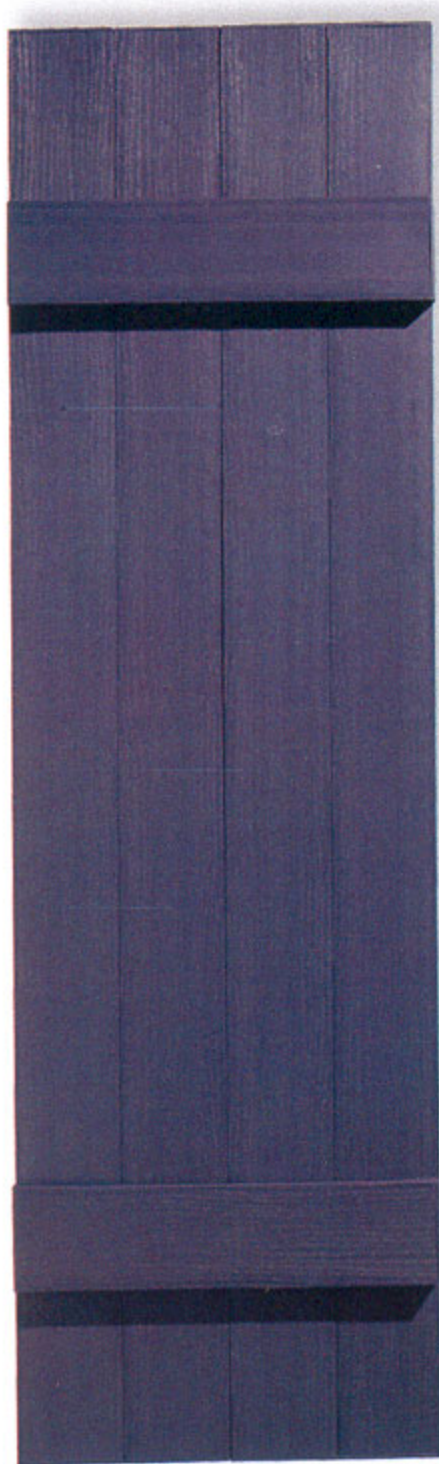


TRADITIONAL OPEN LOUVERED

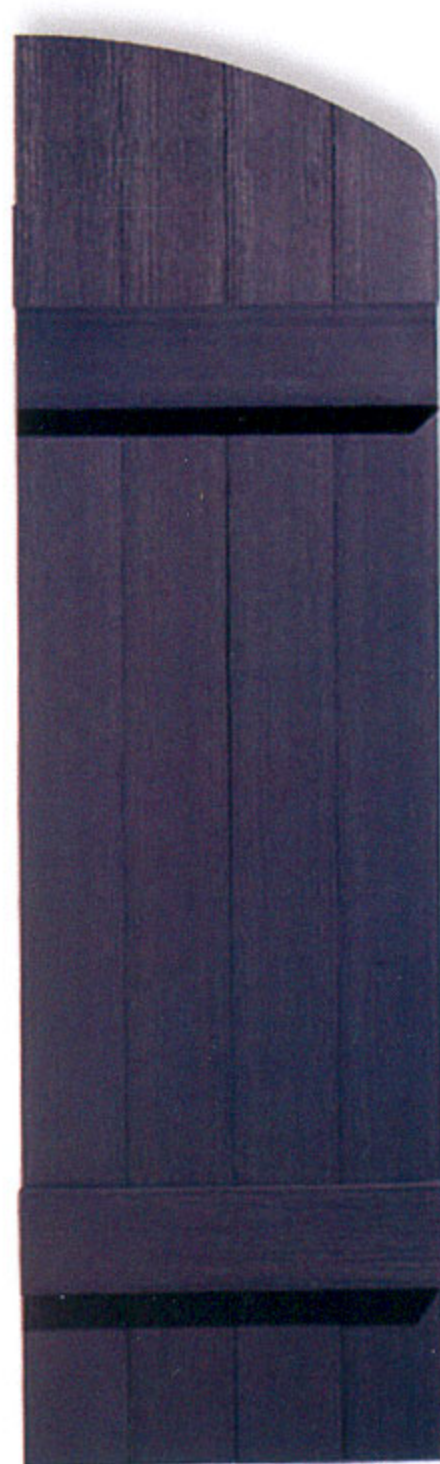


STANDARD BOARD AND BATTEN

4 Board Joined
14" wide



Arch Top 4 Board Joined
14" wide



3 Board Spaced
12" wide



008
CRANBERRY



009
BRICK



010
HUNTER
GREEN



011
HERITAGE
GREEN



012
COFFEE
BROWN



057
TAN



083
MUSKET
BROWN

CUSTOM BOARD AND BATTEN

2 Distinctive Styles - 8 Varying Widths

- Custom length Board and Batten Shutters are available in lengths from 28" to 80" on the 1/4"
- Individual boards are 3 1/2" wide and spacing between boards is 3/4"
- Custom Board and Batten shutters can be ordered in the following configurations/widths: see below

Call for longer length availability



2
Board
Joined
7"



2
Board
Spaced
7 3/4"



3
Board
Joined
10 1/2"



3
Board
Spaced
12"



4
Board
Joined
14"



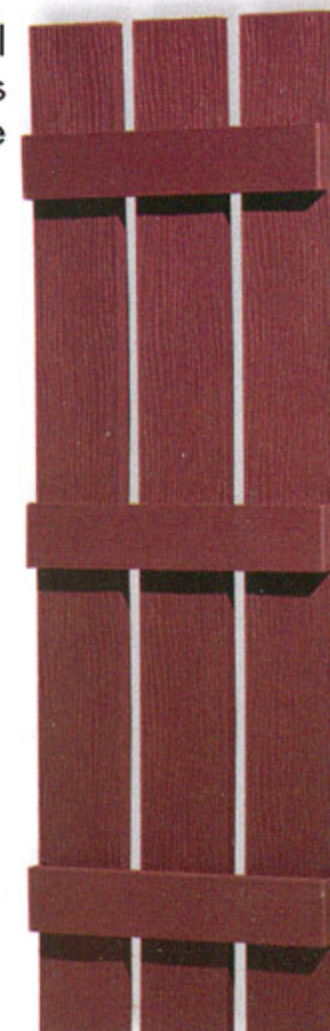
4
Board
Spaced
16 1/4"



5
Board
Joined
17 1/2"



5
Board
Spaced
20 1/2"



Shutters 56" and over will have 3 cross battens as shown here

EASY, SIMPLE INSTALLATION

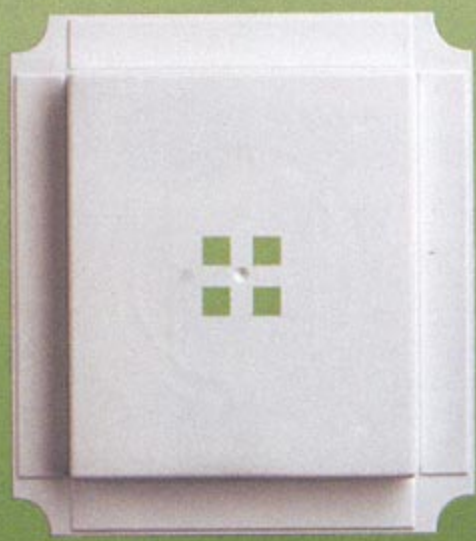


Shutter-Tite
Fasteners



Painted Metal-Head
Screws

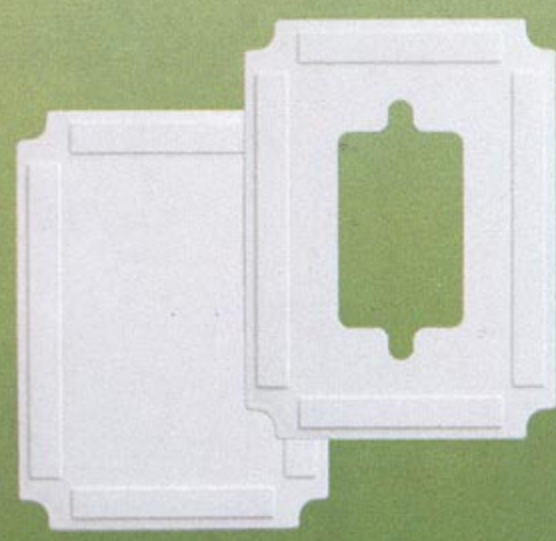
MOUNTING BLOCKS



STANDARD



STANDARD
w/Knockout



MINI

MINI
w/Knockout



BIG BLOCK



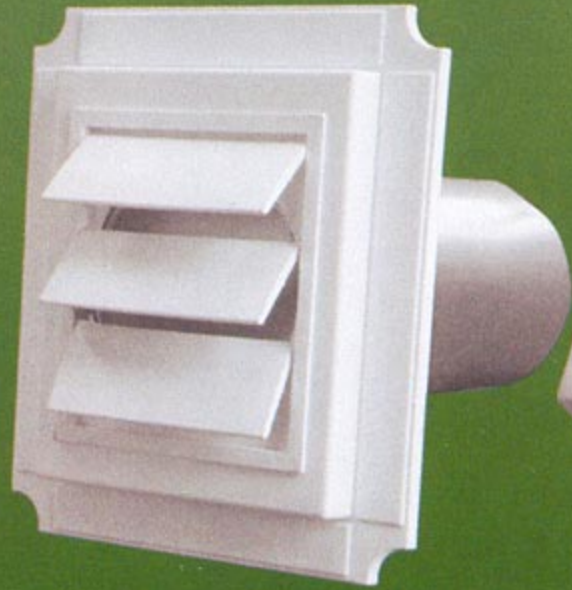
STANDARD
ELECTRICAL

**U.L.
BLOCKS**

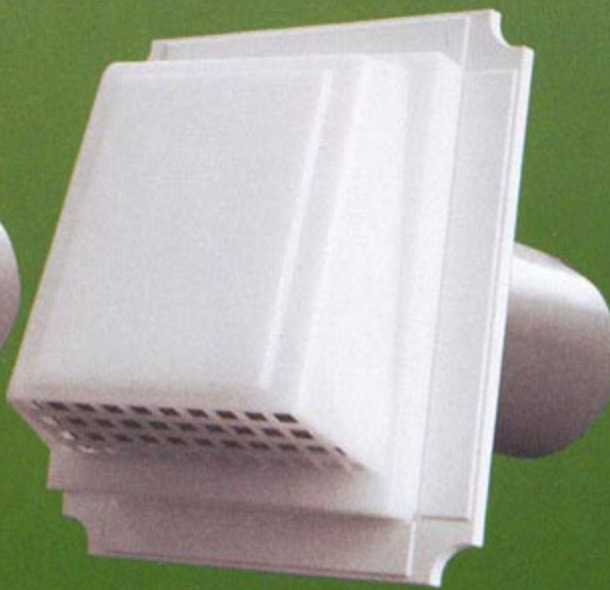


BIG BLOCK
ELECTRICAL

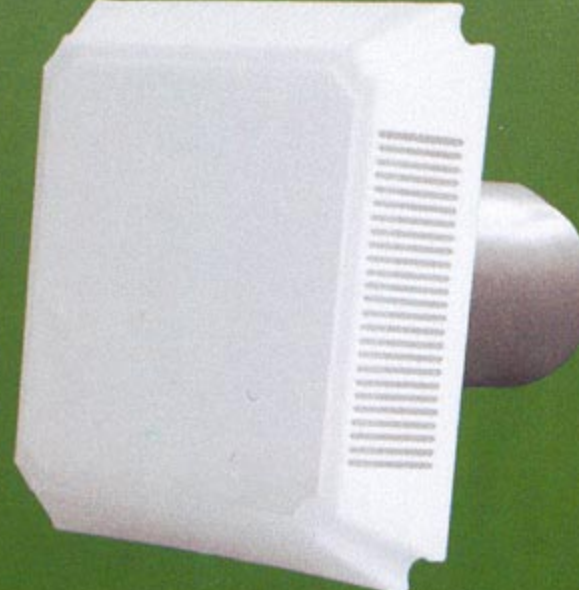
VENTS



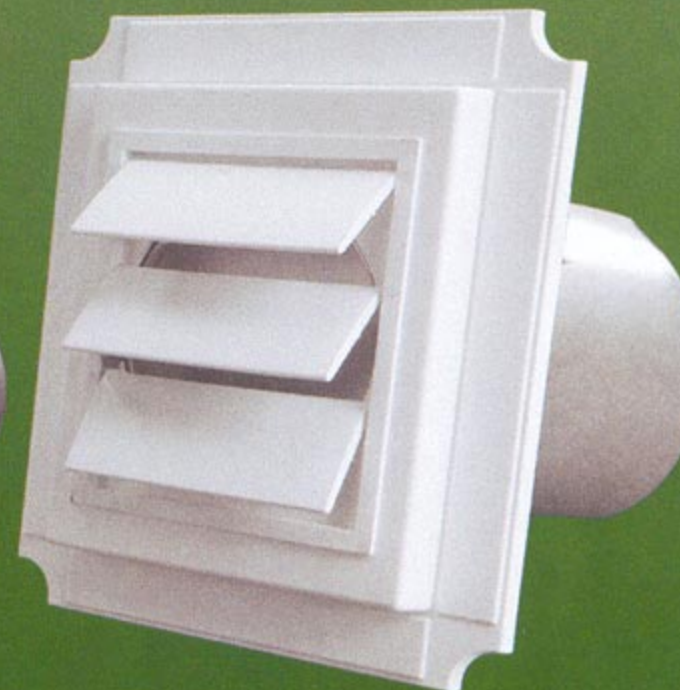
4" LOUVERED



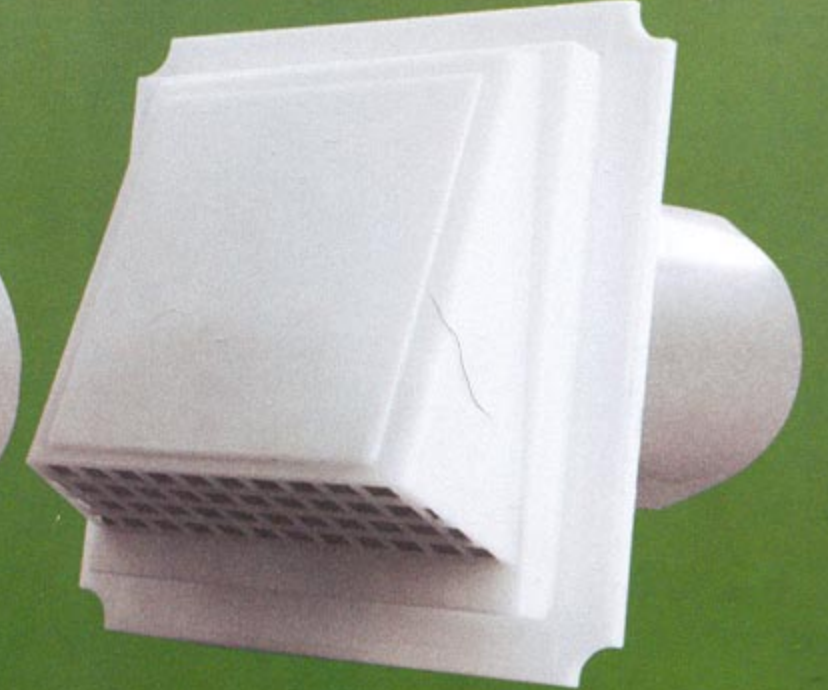
4" HOODED



4" INTAKE/EXHAUST

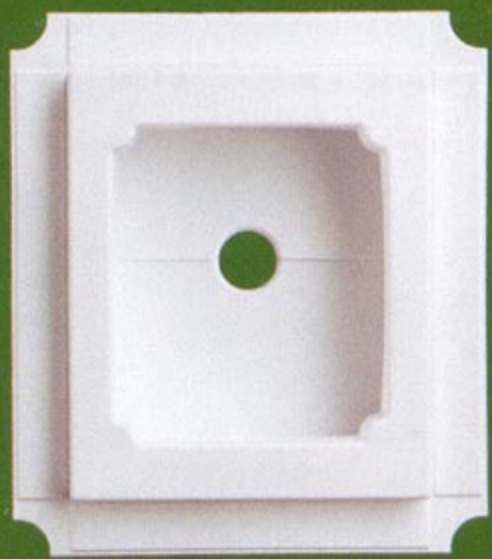


6" LOUVERED



6" HOODED

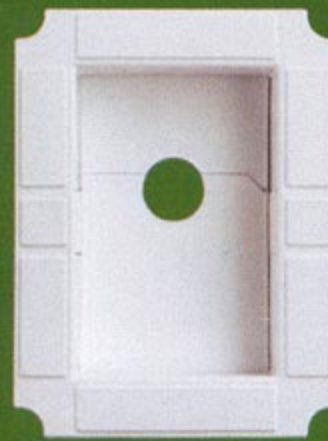
SPLIT RECESSED BLOCKS



STANDARD



STANDARD
w/Knockout



MINI



MINI
w/Knockout



XL



XL
w/Knockout

For
Insulated
Siding

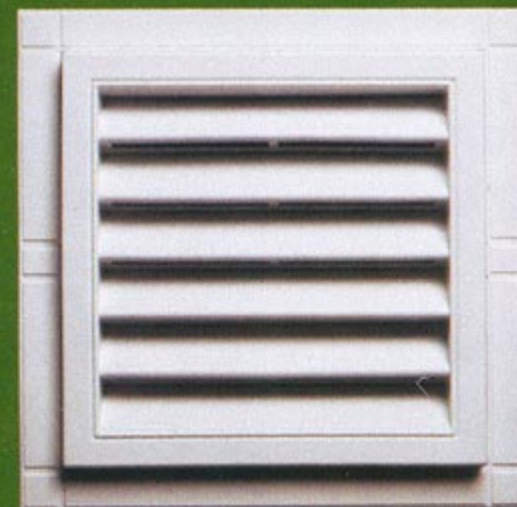
GABLE VENTS



OCTAGONS



ROUNDS



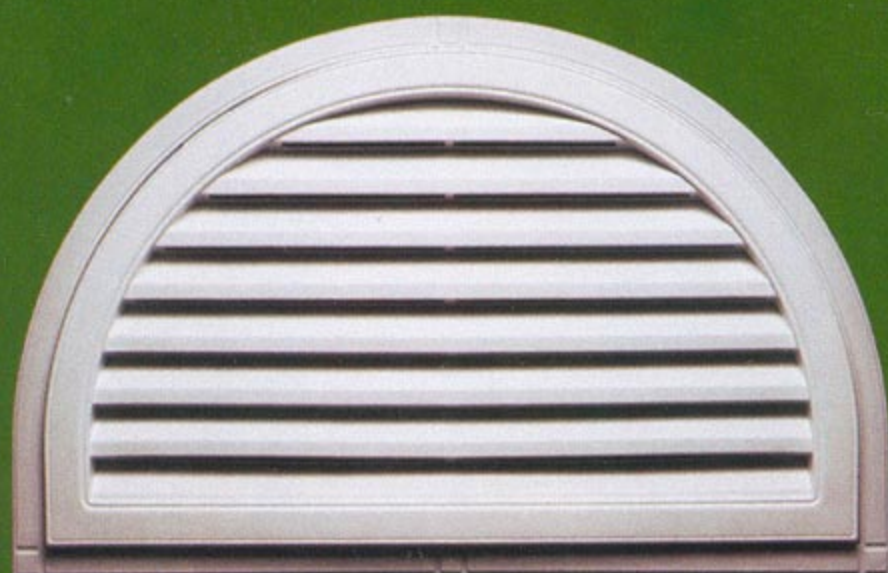
SQUARE



RECTANGLES



ROUND TOPS



HALF ROUND



VARIOUS PITCH TRIANGLES

Siding By Ben

Ben Capriato

6621 Elmwood Rd

Mentor, OH 44060

(440) 974-8741

www.sidingbyben.com